

Welcome



"Connecting FAMILIES to RESOURCES builds better COMMUNITY"

www.paulding.gafcp.org

Board of Education - Attendance

Data Comparison Jan/Feb 2015 vs Jan/Feb 2014

Total Enrollment Jan/Feb 2015.....	28,432
Total Enrollment Jan/Feb 2014.....	28,484
Increase/Decrease.....	-52
Average Daily Attendance Jan/Feb 2015.....	95.3%
Average Daily Attendance Jan/Feb 2014.....	95.1%
Increase/Decrease.....	+0.2%

Board of Education - Students in Need

Data Comparison February 2015 vs February 2014

Total Identified Homeless Feb 2015.....481

Total Identified Homeless Feb 2014.....425

Increase/Decrease.....+56

Free/Reduced Lunch Feb 2015.....13,595

Free/Reduced Lunch Feb 2014.....13,016

Increase/Decrease.....+579

Students in Need

Data Comparison February 2015 vs February 2014

Free/Reduced Lunch Feb 2015.....13,595

Free/Reduced Lunch Feb 2014.....13,016

Increase/Decrease.....+579

Total Children Served via Weekend Food 2015.....613

Total Children Served via Weekend Food 2014.....572

Increase/Decrease.....+41

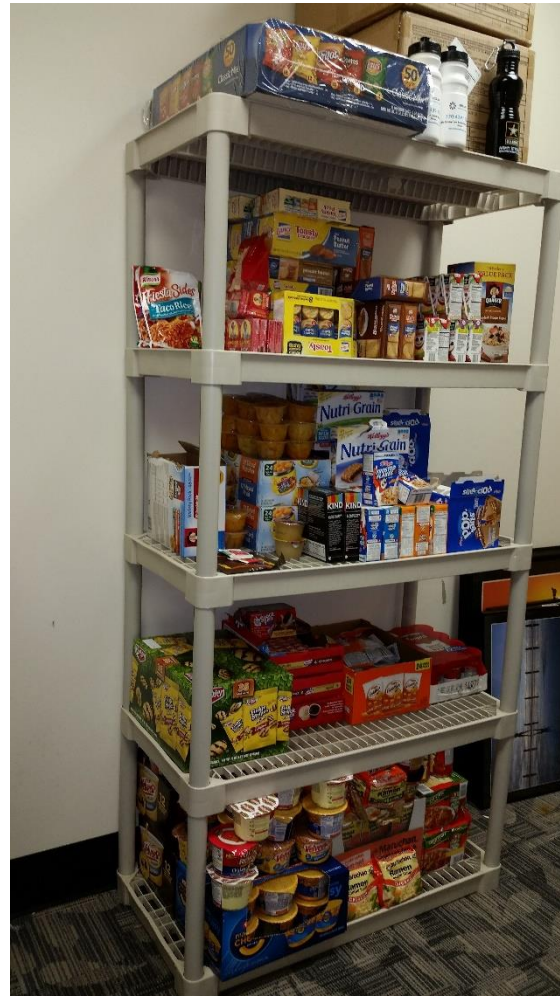
16 elementary schools

1 middle school

1 high school with new resource room!!

Students in Need

EPHS Resource Room



Department of Health

Children Services

Data Comparison – February 2015 vs February 2014

Immunizations Feb 2015.....	71
Immunizations Feb 2014.....	77
Increase/Decrease.....	-6
Children's 1 st Feb 2015.....	5
Children's 1 st Feb 2014.....	5
Increase/Decrease.....	+10
Children's Medical Services Feb 2015.....	47
Children's Medical Services Feb 2014.....	7
Increase/Decrease.....	+40
Hearing/Vision/Dental Screenings Feb 2015.....	40
Hearing/Vision/Dental Screenings Feb 2014.....	92
Increase/Decrease.....	-52

Department of Health

Family Services

Data Comparison – February 2015 vs February 2014

Family Planning Services Feb 2015.....	0
Family Planning Services Feb 2014.....	22
Increase/Decrease.....	-22
STD Checks Feb 2015.....	0
STD Checks Feb 2014.....	0
Increase/Decrease.....	0
WIC Participants Feb 2015.....	728
WIC Participants Feb 2014.....	712
Increase/Decrease.....	+16

DFCS – Child Protective Services

Data Comparison February 2015 vs February 2014

# Children in Custody Feb 2015.....	125
# Children in Custody Feb 2014.....	109
Increase/Decrease.....	+16
New Investigations Feb 2015.....	76
New Investigations Feb 2014.....	116
Increase/Decrease.....	-40
CPS On-going Feb 2015.....	23
CPS On-going Feb 2014.....	20
Increase/Decrease.....	+3
Family Support Feb 2015.....	113
Family Support Feb 2014.....	98
Increase/Decrease.....	+15

DFCS – Family Assistance

Data Comparison February 2015 vs February 2014

Food Stamps Feb 2015	7,050
Food Stamps Feb 2014	6,896
Increase/Decrease.....	+154

PFCCC Program Updates

Rejuvenate Hope

- Goal = 40 mentors for biological parents with children in DFCS custody
- Currently have 15 mentors
- Looking for 25 more mentors
- Currently working to place 11 referrals with a mentor

Back to School Event

- Collecting book bags and supplies to serve 1200 students
- Tentative date for event July 25 (Saturday)
- Working out location details
- Supply list available – bring donations to Nina

Teen Maze

- Will not be able to do a countywide teen maze but working to provide a mini-maze at EPHS this Fall
- More info to follow

Communities of Hope

- More information to follow in the next couple of months